



# Importance of communication between school and parents

Parent workshop 9.09.2025

## Regular communication

- With class teacher and teaching assistant – every day (at the end of the day)
- Senior leaders – on playground at 8.30 and 3.30/Fri 1.00 – every day
- School Office- every day
- SMS or email via Arbor

- Weekly Headteacher Surgery – every Tuesday 2.00-3.30
- Annual Parent Survey

# Newsletters and letters, website and social media

Monthly newsletters

Termly class letters  
(curriculum)

Letters re: events  
(e.g. school trips,  
Accelerated Reader,  
Phonics etc.)

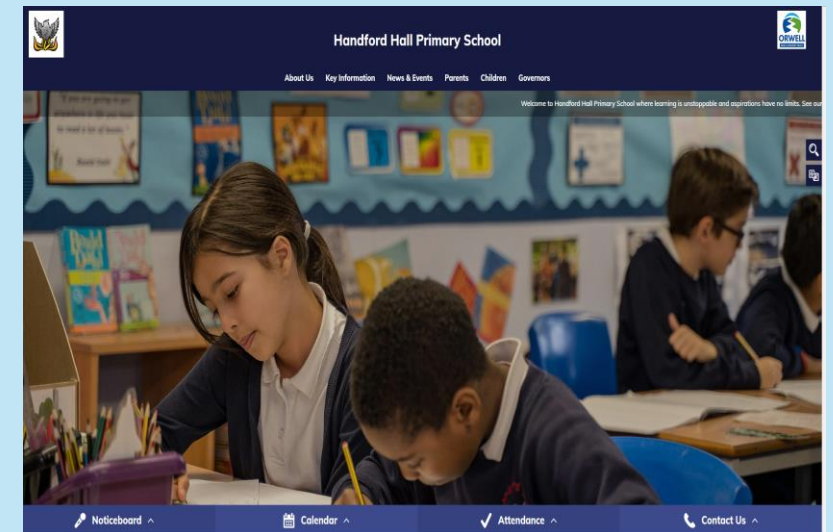
## School X (Twitter)

<https://x.com/handfordhallps?lang=en>



## School website

<https://www.handfordhall.omat.org.uk>



# 2025/26 academic year - calendar



School starts **TERM DATES**  
**2025-2026**

September 25							October 25							November 25							December 25							
Su	M	Tu	W	Th	F	Sa	Su	M	Tu	W	Th	F	Sa	Su	M	Tu	W	Th	F	Sa	Su	M	Tu	W	Th	F	Sa	
	1	2	3	4	5	6	7	8	9	10	11	12	13	14	15	16	17	18	19	20	21	22	23	24	25	26	27	
7	8	9	10	11	12	13	14	15	16	17	18	19	20	21	22	23	24	25	26	27	28	29	30					
14	15	16	17	18	19	20	21	22	23	24	25	26	27	28	29	30												
21	22	23	24	25	26	27	28	29	30	31				1	2	3	4	5	6	7	8	9	10	11	12	13	14	15
28	29	30												16	17	18	19	20	21	22	23	24	25	26	27	28	29	
							26	27	28	29	30	31		23	24	25	26	27	28	29	30							
														30														

January 26							February 26							March 26							April 26						
Su	M	Tu	W	Th	F	Sa	Su	M	Tu	W	Th	F	Sa	Su	M	Tu	W	Th	F	Sa	Su	M	Tu	W	Th	F	Sa
				1	2	3	4	5	6	7	8	9	10	11	12	13	14	15	16	17	18	19	20	21	22	23	24
4	5	6	7	8	9	10	11	12	13	14	15	16	17	18	19	20	21	22	23	24	25	26	27	28	29	30	31
11	12	13	14	15	16	17	18	19	20	21	22	23	24	25	26	27	28	29	30	31							
18	19	20	21	22	23	24	25	26	27	28	29	30	31														
25	26	27	28	29	30	31																					

May 26							June 26							July 26							August 26						
Su	M	Tu	W	Th	F	Sa	Su	M	Tu	W	Th	F	Sa	Su	M	Tu	W	Th	F	Sa	Su	M	Tu	W	Th	F	Sa
					1	2	3	4	5	6	7	8	9	10	11	12	13	14	15	16	17	18	19	20	21	22	23
3	4	5	6	7	8	9	10	11	12	13	14	15	16	17	18	19	20	21	22	23	24	25	26	27	28	29	30
10	11	12	13	14	15	16	17	18	19	20	21	22	23	24	25	26	27	28	29	30	31						
17	18	19	20	21	22	23	24	25	26	27	28	29	30	31													
24	25	26	27	28	29	30	28	29	30																		
31																											

School holiday and PD days - no school for children













### Summary of dates for 2025/26









September 2025	April 2026
<p>1.09 - PD day – no school for children                      2.09 - PD day – no school for children                      3.09 - school starts                      15.09 – KS2 science week                      TBC – individual photos</p>	<p>13.04 – school starts                      13.04 – Science week</p>
October 2025	May 2026
<p>8.10 – no school for children - Parent Consultation Day (9.00-6.00)                      8.10 – Flu vaccinations for children will be available at HH 9.00-6.00                      HALF TERM (27.10 – 31.10.2025)</p>	<p>4.05 – Bank Holiday                      5.05 – school starts                      Week beginning 11.05 – Year 6 SATs                      HALF TERM (25.05 – 29.05.2026)</p>
November 2025	June 2026
<p>3.11 - PD day – no school for children                      4.11 – Science week                      5.11 - 9.15am Reception open mornings (new intake 2026)                      14.11 - 9.15am Reception open afternoon (new intake 2026)</p>	<p>1.06 – Science week                      Year 6 Crucial crew – date tbc                      Year 6 transition days to high schools – date tbc                      17.06 – SPORTS DAY</p>
December 2025	July 2026
<p>Trips to Theatre to see Panto</p> <ul style="list-style-type: none"> <li>• Wednesday 10<sup>th</sup> Dec at 10am</li> <li>• Wednesday 10<sup>th</sup> Dec at 1.30pm</li> <li>• Thursday 11<sup>th</sup> Dec at 10am</li> <li>• Thursday 11<sup>th</sup> Dec at 1.30pm</li> <li>• Friday 12<sup>th</sup> Dec at 10am</li> </ul> <p>15.12 - Christmas production 2.30 for Y2 parents                      16.12 – Christmas production 2.30 for Year 1 parents                      18.12 – Christmas dinner                      19.12 – 9.15 KS1 Celebration assembly, 11.00 – KS2 assembly                      CHRISTMAS BREAK (22.12– 5.01.2026)</p>	<p>1.07 – New Reception Induction meeting for Parents (6.00pm)                      14.07 – Year 6 Production                      15.07 – ‘Meet your new class teacher’ transitions sessions                      16.07.2026 – Leavers’ Assembly – 10.00am – for year 6 parents only                      17.07. – Celebration assembly</p> <ul style="list-style-type: none"> <li>• 9.15 for Reception, Year 1 and Year 2</li> <li>• 11.00 for Years 3, 4 5 and 6</li> </ul> <p>17.07 – the last day of term</p>
January 2026	
<p>5.01 – PD day – no school for children                      6.01 – school starts                      6.01 – Science week</p>	
February 2026	
<p>4.02 – no school for children- Parent Consultations Day (9.00-6.00)                      HALF TERM (16-02 - 20.02.2026)                      23.02 – PD day – no school for children                      24.02 – Science week</p>	
March 2026	
<p>5.03 - World Book Day                      16.03 – PD day – no school for children                      Easter break – 30.03 – 10.04.2026</p>	

# Attendance protocols



**When it is OK to bring your child to school:**

Condition	Action	Attendance
Cold/cough 	Please bring medicine to school 	In school 
Painful tummy 	Please bring medicine to school 	In school 
Headache 	Please bring medicine to school 	In school 
Painful leg/arm 	Please bring medicine to school 	In school 

Toothache  <small>shutterstock.com - 2226933133</small>	Please bring medicine to school 	In school 
Slight temperature 	Please bring medicine to school 	In school 
Upset tummy/diarrhea/vomiting 	24 hours before returning to school	After 24 hrs*
Chickenpox 	For five days from onset of rash	After 5 days



Sore throat



Please bring medicine  
to school



In school



Curriculum  
Yearly Booklets  
(Reading,  
Writing, Maths)

# Handford Hall Basic Skills booklets

[Home](#) >> [Key Information](#) >> [Curriculum](#) >> Handford Hall Basic Skills booklets



[HH Reception Basic skills](#)



[HH Year 1 Basic skills](#)



[HH Year 2 Basic skills](#)



[HH Year 3 Basic skills](#)



[HH Year 4 Basic skills](#)



[HH Year 5 Basic skills](#)



[HH Year 6 Basic skills](#)

# Example of Year 4

## BASIC SKILLS FOR MATHS

- Count backwards through zero to include negative numbers.
- Compare and order numbers beyond 1000.
- Compare and order numbers with the same number of decimal places up to 2 decimal places.
- Read Roman numerals to 100.
- Find 1000 more/ less than a given number.
- Count in multiples of 6, 7, 9, 25 and 1000
- Recall and use multiplication and division facts all table to 12x12.
- Recognise place value of any 4-digit whole number.
- Round any number to the nearest 10, 100 or 1000.
- Round decimals with 1 decimal place to nearest whole number.
- Add and subtract:
  - Numbers with up to 4-digits using efficient written methods (column)
  - Numbers with up to 1decimal place.
- Multiply:
  - 2-digit by 1-digit
  - 3-digit by 1-digit
- Count up/down in hundredths.
- Write equivalent fractions.
- Add and subtract fractions with same denominator.
- Read, write and convert time between analogue and digital 12 and 24 hour clocks.

## Handford Hall Primary School

**The following areas of learning are known as Basic Skills. They have a specific role in helping children meet the year group expectations.**

**The Basic Skills are designed to identify the essential components that children need to become confident with, i.e. be able to demonstrate in independent tasks and be able to apply in other contexts.**

**By the end of this academic year, most children will be able to do the following:**

BASIC SKILLS FOR **YEAR 4**  
IN READING, WRITING & MATHS

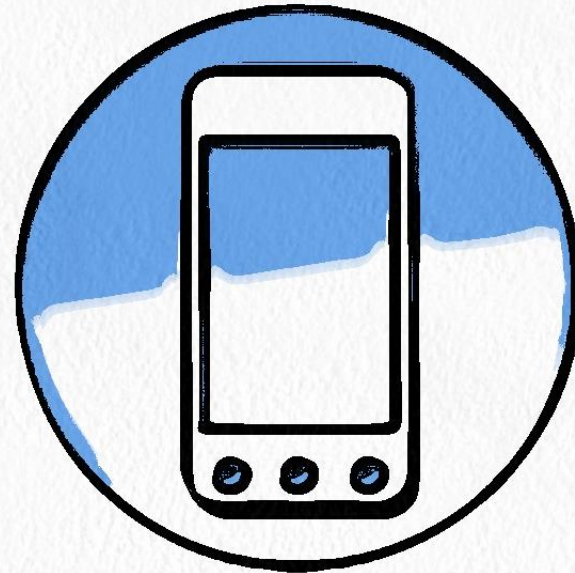
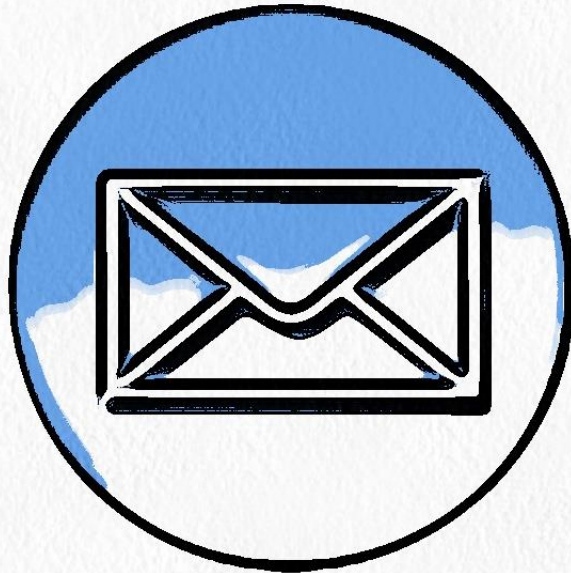
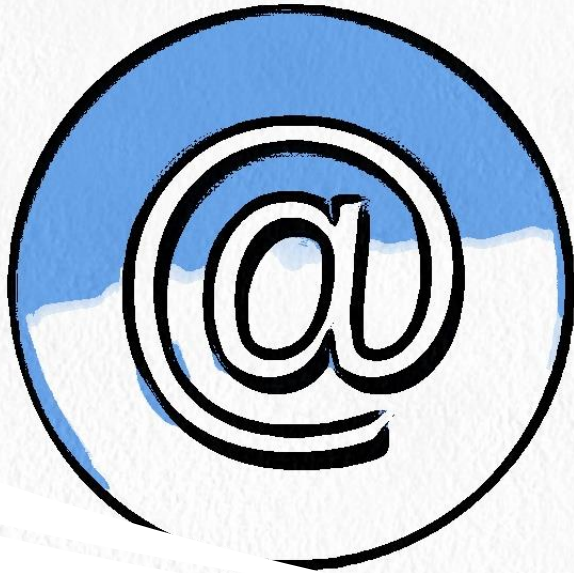
## BASIC SKILLS FOR READING

- Have a positive attitude to reading.
- Give a personal point of view on a text.
- Re-explain a text with confidence.
- Justify inferences with evidence, predicting what might happen from details stated or implied.
- Use appropriate voices for characters within a story.
- Recognise apostrophe of possession (plural)
- Identify how sentence type can be changed by altering word order, tenses, adding/deleting words or amending punctuation.
- Explain why a writer has used different sentence types or a particular word order and the effect it has created.
- Skim & scan to locate information and/or answer a question.
- Discuss words and phrases that capture the reader's imagination.
- Read for a range of purposes.

## BASIC SKILLS FOR WRITING

- Continue to have a positive attitude and stamina for writing.
- Vary sentence structure, using different openers.
- Use adjectival phrases (e.g. biting cold wind).
- Use appropriate choice of noun or pronoun.
- Use fronted adverbials.
- Use apostrophe for plural possession.
- Use a comma after fronted adverbial (e.g. Later that day, I heard bad news).
- Use commas to mark clauses.
- Use inverted commas and other punctuation to punctuate direct speech.
- Use paragraphs to organise ideas around a theme.
- Use fronted adverbs to introduce paragraphs.
- Write with increasing legibility, consistency and fluency.
- In narratives, create setting, characters and plot.
- In non-narrative material, use appropriate organisational devices.

# contact us



• School Office: 01473 251

• Email: [schooloffice@handfordhall.omat.org.uk](mailto:schooloffice@handfordhall.omat.org.uk)